

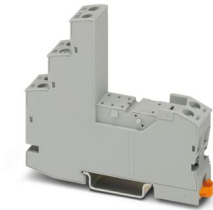
RIF-1-BSC/2X21 - Relay base



2900930

<https://www.phoenixcontact.com/gb/products/2900930>

Please be informed that the data shown in this PDF document is generated from our online catalog. Please find the complete data in the user documentation. Our general terms of use for downloads are valid.



RIF-1... relay base, for miniature power relay with 1 or 2 changeover contacts or identical solid-state relays, screw connection, plug-in option for input/interference suppression modules, for mounting on NS 35/7,5

Commercial data

Item number	2900930
Packing unit	10 pc
Minimum order quantity	10 pc
Sales key	CK6512
Product key	CK6512
Catalog page	Page 289 (C-5-2019)
GTIN	4046356733137
Weight per piece (including packing)	50.8 g
Weight per piece (excluding packing)	45 g
Customs tariff number	85366990
Country of origin	CN

RIF-1-BSC/2X21 - Relay base



2900930

<https://www.phoenixcontact.com/gb/products/2900930>

Technical data

Notes

Notes on operation	FBS 2-6... plug-in bridge for the input side (A2) and FBS-2-8... plug-in bridge for the output side (11/21)
--------------------	---

Product properties

Product type	Relay socket
Product family	RIFLINE complete

Data management status

Article revision	04
------------------	----

Electrical properties

Nominal voltage U_N	250 V AC/DC
Nominal current I_N	max. 15.5 A (Depends on application/assembly)
Protective circuit	depending on the selected input/suppressor modules

Connection data

Connection method	Screw connection
Stripping length	8 mm
Conductor cross section rigid	0.5 mm ² ... 4 mm ²
Conductor cross-section rigid (2 conductors with same cross section)	0.5 mm ² ... 2.5 mm ²
Conductor cross section flexible	0.5 mm ² ... 4 mm ²
	0.5 mm ² ... 4 mm ² (Ferrule with plastic sleeve)
Conductor cross section flexible (2 conductors with same cross section)	0.5 mm ² ... 2.5 mm ²
	0.5 mm ² ... 1.5 mm ² (TWIN ferrule with plastic sleeve)
Conductor cross section AWG	20 ... 10 (solid)
	20 ... 12 (flexible)
Tightening torque	0.5 Nm ... 0.6 Nm

Dimensions

Width	16 mm
Height	89 mm
Depth Retaining bracket	75 mm (with retaining bracket)

Material specifications

Color	gray (RAL 7042)
Flammability rating according to UL 94	V2 (Housing)

Environmental and real-life conditions

Ambient conditions

Ambient temperature (operation)	-40 °C ... 85 °C (Depends on application/assembly)
Ambient temperature (storage/transport)	-40 °C ... 85 °C

RIF-1-BSC/2X21 - Relay base



2900930

<https://www.phoenixcontact.com/gb/products/2900930>

Approvals

Corrosive gas test

Identification	ISA-S71.04. G3 Harsh Group
	EN 60068-2-60

Mounting

Mounting type	DIN rail mounting
Mounting position	any

RIF-1-BSC/2X21 - Relay base



2900930

<https://www.phoenixcontact.com/gb/products/2900930>

Approvals

To download certificates, visit the product detail page: <https://www.phoenixcontact.com/gb/products/2900930>



CSA

Approval ID: 76787



UL Recognized

Approval ID: FILE E 113228



EAC

Approval ID: RU D-DE.B*00573/18



DNV GL

Approval ID: TAA000018V

RIF-1-BSC/2X21 - Relay base



2900930

<https://www.phoenixcontact.com/gb/products/2900930>

Classifications

ECLASS

ECLASS-11.0	27371603
ECLASS-12.0	27371603
ECLASS-13.0	27371603

ETIM

ETIM 9.0	EC001456
----------	----------

UNSPSC

UNSPSC 21.0	39122300
-------------	----------

RIF-1-BSC/2X21 - Relay base



2900930

<https://www.phoenixcontact.com/gb/products/2900930>

Environmental product compliance

EU RoHS

Fulfills EU RoHS substance requirements	Yes, No exemptions
---	--------------------

China RoHS

Environment friendly use period (EFUP)	EFUP-E
	No hazardous substances above the limits

EU REACH SVHC

REACH candidate substance (CAS No.)	No substance above 0.1 wt%
-------------------------------------	----------------------------

RIF-1-BSC/2X21 - Relay base

2900930

<https://www.phoenixcontact.com/gb/products/2900930>



Mandatory accessories

REL-MR- 12DC/21HC - Single relay

2961309

<https://www.phoenixcontact.com/gb/products/2961309>



Plug-in miniature power relay, with power contact for high continuous currents, 1 changeover contact, input voltage 12 V DC

REL-MR- 24DC/21HC - Single relay

2961312

<https://www.phoenixcontact.com/gb/products/2961312>



Plug-in miniature power relay, with power contact for high continuous currents, 1 changeover contact, input voltage 24 V DC

RIF-1-BSC/2X21 - Relay base

2900930

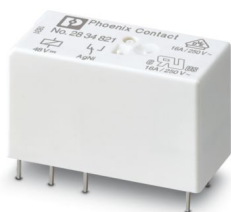
<https://www.phoenixcontact.com/gb/products/2900930>



REL-MR- 48DC/21HC - Single relay

2834821

<https://www.phoenixcontact.com/gb/products/2834821>



Plug-in miniature power relay, with power contact for high continuous currents, 1 changeover contact, input voltage 48 V DC

REL-MR- 60DC/21HC - Single relay

2961325

<https://www.phoenixcontact.com/gb/products/2961325>



Plug-in miniature power relay, with power contact for high continuous currents, 1 changeover contact, 60 V DC

RIF-1-BSC/2X21 - Relay base

2900930

<https://www.phoenixcontact.com/gb/products/2900930>



REL-MR-110DC/21HC - Single relay

2961338

<https://www.phoenixcontact.com/gb/products/2961338>

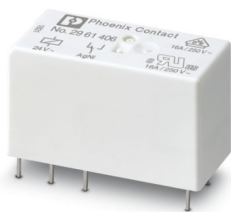


Plug-in miniature power relay, with power contact for high continuous currents, 1 changeover contact, input voltage 110 V DC

REL-MR- 24AC/21HC - Single relay

2961406

<https://www.phoenixcontact.com/gb/products/2961406>



Plug-in miniature power relay, with power contact for high continuous currents, 1 changeover contact, input voltage 24 V AC

RIF-1-BSC/2X21 - Relay base

2900930

<https://www.phoenixcontact.com/gb/products/2900930>



REL-MR-120AC/21HC - Single relay

2961419

<https://www.phoenixcontact.com/gb/products/2961419>



Plug-in miniature power relay, with power contact for high continuous currents, 1 changeover contact, input voltage 120 V AC

REL-MR-230AC/21HC - Single relay

2961422

<https://www.phoenixcontact.com/gb/products/2961422>



Plug-in miniature power relay, with power contact for high continuous currents, 1 changeover contact, input voltage 230 V AC

RIF-1-BSC/2X21 - Relay base

2900930

<https://www.phoenixcontact.com/gb/products/2900930>



REL-MR- 12DC/21HC AU - Single relay

2961532

<https://www.phoenixcontact.com/gb/products/2961532>



Plug-in miniature power relay, with multi-layer gold contact for high continuous currents, 1 changeover contact, input voltage 12 V DC

REL-MR- 24DC/21HC AU - Single relay

2961545

<https://www.phoenixcontact.com/gb/products/2961545>



Plug-in miniature power relay, with multi-layer gold contact for high continuous currents, 1 changeover contact, input voltage 24 V DC

RIF-1-BSC/2X21 - Relay base

2900930

<https://www.phoenixcontact.com/gb/products/2900930>



REL-MR-110DC/21HC AU - Single relay

2961561

<https://www.phoenixcontact.com/gb/products/2961561>



Plug-in miniature power relay, with multi-layer gold contact for high continuous currents, 1 changeover contact, input voltage 110 V DC

REL-MR- 24AC/21HC AU - Single relay

2961503

<https://www.phoenixcontact.com/gb/products/2961503>



Plug-in miniature power relay, with multi-layer gold contact for high continuous currents, 1 changeover contact, input voltage 24 V AC

RIF-1-BSC/2X21 - Relay base

2900930

<https://www.phoenixcontact.com/gb/products/2900930>



REL-MR-120AC/21HC AU - Single relay

2961516

<https://www.phoenixcontact.com/gb/products/2961516>



Plug-in miniature power relay, with multi-layer gold contact for high continuous currents, 1 changeover contact, input voltage 120 V AC

REL-MR-230AC/21HC AU - Single relay

2961529

<https://www.phoenixcontact.com/gb/products/2961529>



Plug-in miniature power relay, with multi-layer gold contact for high continuous currents, 1 changeover contact, input voltage 230 V AC

RIF-1-BSC/2X21 - Relay base

2900930

<https://www.phoenixcontact.com/gb/products/2900930>



REL-MR- 12DC/21-21 - Single relay

2961257

<https://www.phoenixcontact.com/gb/products/2961257>



Plug-in miniature power relay, with power contact, 2 changeover contacts, input voltage 12 V DC

REL-MR- 24DC/21-21 - Single relay

2961192

<https://www.phoenixcontact.com/gb/products/2961192>



Plug-in miniature power relay, with power contact, 2 changeover contacts, input voltage 24 V DC

RIF-1-BSC/2X21 - Relay base

2900930

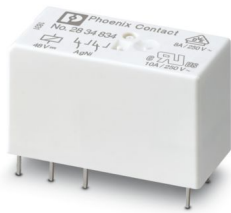
<https://www.phoenixcontact.com/gb/products/2900930>



REL-MR- 48DC/21-21 - Single relay

2834834

<https://www.phoenixcontact.com/gb/products/2834834>



Plug-in miniature power relay, with power contact, 2 changeover contacts, input voltage 48 V DC

REL-MR- 60DC/21-21 - Single relay

2961273

<https://www.phoenixcontact.com/gb/products/2961273>



Plug-in miniature power relay, with power contact, 2 changeover contacts, input voltage 60 V DC

RIF-1-BSC/2X21 - Relay base

2900930

<https://www.phoenixcontact.com/gb/products/2900930>



REL-MR-110DC/21-21 - Single relay

2961202

<https://www.phoenixcontact.com/gb/products/2961202>



Plug-in miniature power relay, with power contact, 2 changeover contacts, input voltage 110 V DC

REL-MR- 24AC/21-21 - Single relay

2961435

<https://www.phoenixcontact.com/gb/products/2961435>



Plug-in miniature power relay, with power contact, 2 changeover contacts, input voltage 24 V AC

RIF-1-BSC/2X21 - Relay base

2900930

<https://www.phoenixcontact.com/gb/products/2900930>



REL-MR-120AC/21-21 - Single relay

2961448

<https://www.phoenixcontact.com/gb/products/2961448>



Plug-in miniature power relay, with power contact, 2 changeover contacts, input voltage 120 V AC

REL-MR-230AC/21-21 - Single relay

2961451

<https://www.phoenixcontact.com/gb/products/2961451>



Plug-in miniature power relay, with power contact, 2 changeover contacts, input voltage 230 V AC

RIF-1-BSC/2X21 - Relay base

2900930

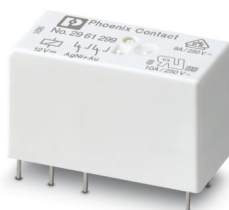
<https://www.phoenixcontact.com/gb/products/2900930>



REL-MR- 12DC/21-21AU - Single relay

2961299

<https://www.phoenixcontact.com/gb/products/2961299>

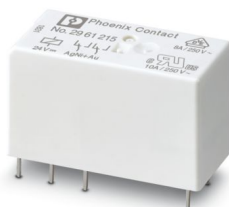


Plug-in miniature power relay, with multi-layer gold contact, 2 changeover contacts, input voltage 12 V DC

REL-MR- 24DC/21-21AU - Single relay

2961215

<https://www.phoenixcontact.com/gb/products/2961215>



Plug-in miniature power relay, with multi-layer gold contact, 2 changeover contacts, input voltage 24 V DC

RIF-1-BSC/2X21 - Relay base

2900930

<https://www.phoenixcontact.com/gb/products/2900930>



REL-MR- 48DC/21-21AU - Single relay

2834847

<https://www.phoenixcontact.com/gb/products/2834847>



Plug-in miniature power relay, with multi-layer gold contact, 2 changeover contacts, input voltage 48 V DC

REL-MR- 60DC/21-21AU - Single relay

2961286

<https://www.phoenixcontact.com/gb/products/2961286>



Plug-in miniature power relay, with multi-layer gold contact, 2 changeover contacts, input voltage 60 V DC

RIF-1-BSC/2X21 - Relay base

2900930

<https://www.phoenixcontact.com/gb/products/2900930>



REL-MR-110DC/21-21AU - Single relay

2961228

<https://www.phoenixcontact.com/gb/products/2961228>



Plug-in miniature power relay, with multi-layer gold contact, 2 changeover contacts, input voltage 110 V DC

REL-MR- 24AC/21-21AU - Single relay

2961464

<https://www.phoenixcontact.com/gb/products/2961464>



Plug-in miniature power relay, with multi-layer gold contact, 2 changeover contacts, input voltage 24 V AC

RIF-1-BSC/2X21 - Relay base

2900930

<https://www.phoenixcontact.com/gb/products/2900930>



REL-MR-120AC/21-21AU - Single relay

2961477

<https://www.phoenixcontact.com/gb/products/2961477>



Plug-in miniature power relay, with multi-layer gold contact, 2 changeover contacts, input voltage 120 V AC

REL-MR-230AC/21-21AU - Single relay

2961480

<https://www.phoenixcontact.com/gb/products/2961480>



Plug-in miniature power relay, with multi-layer gold contact, 2 changeover contacts, input voltage 230 V AC

RIF-1-BSC/2X21 - Relay base

2900930

<https://www.phoenixcontact.com/gb/products/2900930>



REL-MR- 24DC/21HC/MS - Single relay

2987888

<https://www.phoenixcontact.com/gb/products/2987888>



Plug-in miniature relay, with power contact, 1 changeover contact, test button, mechanical switching position indicator, status LED, freewheeling diode, polarity A1+, A2-, input voltage 24 V DC

REL-MR- 24AC/21HC/MS - Single relay

2987891

<https://www.phoenixcontact.com/gb/products/2987891>



Plug-in miniature relay, with power contact, 1 changeover contact, test button, mechanical switching position indicator, status LED, input voltage 24 V AC

RIF-1-BSC/2X21 - Relay base

2900930

<https://www.phoenixcontact.com/gb/products/2900930>



REL-MR-120AC/21HC/MS - Single relay

2987901

<https://www.phoenixcontact.com/gb/products/2987901>



Plug-in miniature relay, with power contact, 1 changeover contact, test button, mechanical switching position indicator, status LED, input voltage 120 V AC

REL-MR-230AC/21HC/MS - Single relay

2987914

<https://www.phoenixcontact.com/gb/products/2987914>



Plug-in miniature relay, with power contact, 1 changeover contact, test button, mechanical switching position indicator, status LED, input voltage 230 V AC

RIF-1-BSC/2X21 - Relay base

2900930

<https://www.phoenixcontact.com/gb/products/2900930>



REL-MR- 24DC/21HC AU/MS - Single relay

2987927

<https://www.phoenixcontact.com/gb/products/2987927>



Plug-in miniature relay, with multi-layer contact with hard gold coating, 1 changeover contact, test button, mechanical switching position indicator, status LED, freewheeling diode, polarity A1+, A2-, input voltage 24 V DC

REL-MR-230AC/21HC AU/MS - Single relay

2987930

<https://www.phoenixcontact.com/gb/products/2987930>



Plug-in miniature relay, with multi-layer contact with hard gold coating, 1 changeover contact, test button, mechanical switching position indicator, status LED, input voltage 230 V AC

RIF-1-BSC/2X21 - Relay base

2900930

<https://www.phoenixcontact.com/gb/products/2900930>



REL-MR- 24DC/21-21/MS - Single relay

2987943

<https://www.phoenixcontact.com/gb/products/2987943>



Plug-in miniature relay, with power contact, 2 changeover contacts, test button, mechanical switching position indicator, status LED, freewheeling diode, polarity A1+, A2, input voltage 24 V DC

REL-MR- 24AC/21-21/MS - Single relay

2987956

<https://www.phoenixcontact.com/gb/products/2987956>



Plug-in miniature relay, with power contact, 2 changeover contacts, test button, mechanical switching position indicator, status LED, input voltage 24 V AC

RIF-1-BSC/2X21 - Relay base

2900930

<https://www.phoenixcontact.com/gb/products/2900930>



REL-MR-120AC/21-21/MS - Single relay

2987969

<https://www.phoenixcontact.com/gb/products/2987969>



Plug-in miniature relay, with power contact, 2 changeover contacts, test button, mechanical switching position indicator, status LED, coil voltage 120 V AC

REL-MR-230AC/21-21/MS - Single relay

2987972

<https://www.phoenixcontact.com/gb/products/2987972>



Plug-in miniature relay, with power contact, 2 changeover contacts, test button, mechanical switching position indicator, status LED, coil voltage 230 V AC

RIF-1-BSC/2X21 - Relay base

2900930

<https://www.phoenixcontact.com/gb/products/2900930>



REL-MR- 24DC/21-21AU/MS - Single relay

2987985

<https://www.phoenixcontact.com/gb/products/2987985>



Plug-in miniature relay, with multi-layer contact with hard gold coating, 2 changeover contacts, test button, mechanical switching position indicator, status LED, freewheeling diode, polarity A1+, A2-, input voltage 24 V DC

REL-MR-230AC/21-21AU/MS - Single relay

2987998

<https://www.phoenixcontact.com/gb/products/2987998>



Plug-in miniature relay, with multi-layer contact with hard gold coating, 2 changeover contacts, test button, mechanical switching position indicator, status LED, coil voltage 230 V AC

RIF-1-BSC/2X21 - Relay base

2900930

<https://www.phoenixcontact.com/gb/products/2900930>



OPT- 5DC/ 24DC/ 5 - Miniature solid-state relay

2982113

<https://www.phoenixcontact.com/gb/products/2982113>



Plug-in miniature solid-state relay, power solid-state relay, 1 N/O contact, input: 5 V DC, output: 3 - 33 V DC/5 A

OPT-24DC/ 24DC/ 5 - Miniature solid-state relay

2982100

<https://www.phoenixcontact.com/gb/products/2982100>



Plug-in miniature solid-state relay, power solid-state relay, 1 N/O contact, input: 24 V DC, output: 3 - 33 V DC/5 A

RIF-1-BSC/2X21 - Relay base

2900930

<https://www.phoenixcontact.com/gb/products/2900930>



OPT-60DC/ 24DC/ 5 - Miniature solid-state relay

2982126

<https://www.phoenixcontact.com/gb/products/2982126>



Plug-in miniature solid-state relay, power solid-state relay, 1 N/O contact, input: 60 V DC, output: 3 - 33 V DC/5 A

OPT- 5DC/230AC/ 2 - Miniature solid-state relay

2982168

<https://www.phoenixcontact.com/gb/products/2982168>



Plug-in miniature solid-state relay, power solid-state relay, 1 N/O contact, input: 5 V DC, output: 24 - 253 V AC/2 A

RIF-1-BSC/2X21 - Relay base

2900930

<https://www.phoenixcontact.com/gb/products/2900930>



OPT-24DC/230AC/ 2 - Miniature solid-state relay

2982171

<https://www.phoenixcontact.com/gb/products/2982171>



Plug-in miniature solid-state relay, power solid-state relay, 1 N/O contact, input: 24 V DC, output: 24 - 253 V AC/2 A

Accessories

FBS 2-6 - Plug-in bridge

3030336

<https://www.phoenixcontact.com/gb/products/3030336>



Plug-in bridge, pitch: 6.2 mm, number of positions: 2, color: red

RIF-1-BSC/2X21 - Relay base

2900930

<https://www.phoenixcontact.com/gb/products/2900930>



FBS 2-6 BU - Plug-in bridge

3036932

<https://www.phoenixcontact.com/gb/products/3036932>



Plug-in bridge, pitch: 6.2 mm, number of positions: 2, color: blue

FBS 2-6 GY - Plug-in bridge

3032237

<https://www.phoenixcontact.com/gb/products/3032237>



Plug-in bridge, pitch: 6.2 mm, number of positions: 2, color: gray

RIF-1-BSC/2X21 - Relay base

2900930

<https://www.phoenixcontact.com/gb/products/2900930>



FBS 2-8 - Plug-in bridge

3030284

<https://www.phoenixcontact.com/gb/products/3030284>



Plug-in bridge, pitch: 8.2 mm, number of positions: 2, color: red

FBS 2-8 BU - Plug-in bridge

3032567

<https://www.phoenixcontact.com/gb/products/3032567>



Plug-in bridge, pitch: 8.2 mm, number of positions: 2, color: blue

RIF-1-BSC/2X21 - Relay base

2900930

<https://www.phoenixcontact.com/gb/products/2900930>



FBS 2-8 GY

7042 - Plug-in bridge

3032541

<https://www.phoenixcontact.com/gb/products/3032541>



Bridge for potential distribution

RIF-RH-1 - Retaining bracket

2900953

<https://www.phoenixcontact.com/gb/products/2900953>



Relay retaining bracket, with ejector function and holder for marking material, suitable for RIF-1 relay base, for 16 mm tall miniature power relay and solid-state relay

RIF-1-BSC/2X21 - Relay base

2900930

<https://www.phoenixcontact.com/gb/products/2900930>



RIF-RH-1-H - Retaining bracket

2904468

<https://www.phoenixcontact.com/gb/products/2904468>



Relay retaining bracket, with ejector function and holder for marking material, suitable for RIF-1 relay base, for 25 mm tall miniature power relay and solid-state relay

RIF-RHM-1 - Relay retaining bracket

2905986

<https://www.phoenixcontact.com/gb/products/2905986>



Relay retaining bracket, wire model, suitable for RIF-1 relay base, for 16 mm high octal miniature power and solid-state relays

RIF-1-BSC/2X21 - Relay base

2900930

<https://www.phoenixcontact.com/gb/products/2900930>



RIF-RHM-1-H - Relay retaining bracket

2905985

<https://www.phoenixcontact.com/gb/products/2905985>



Relay retaining bracket, wire model, suitable for RIF-1 relay base, for 25 mm high octal miniature power relays

STP 5-2 - Marker carriers

0800967

<https://www.phoenixcontact.com/gb/products/0800967>



Marker carriers, snaps into STTB 2,5, STTB 4, PTTB 2,5, and PTTB 4 double-level spring-cage terminal blocks, can be marked with UC-TM 5, UC-TMF 5, UCT-TM 5, UCT-TMF 5, ZB 5, or ZBF 5, gray, unlabeled, mounting type: plug in, lettering field size: 5 x 10.5 mm

RIF-1-BSC/2X21 - Relay base

2900930

<https://www.phoenixcontact.com/gb/products/2900930>



MPS-MT - Test plug

0201744

<https://www.phoenixcontact.com/gb/products/0201744>



Test plug, with solder connection up to 1 mm² conductor cross section, number of positions: 1, color: gray

RIF-LDP-12-24 DC - Plug-in module

2900939

<https://www.phoenixcontact.com/gb/products/2900939>



Plug-in module, for mounting on RIF-1, RIF-2, RIF-3, and RIF-4, with freewheeling diode and yellow LED, polarity: A1+, A2-, input voltage: 12 V DC ... 24 V DC \pm 30 %

RIF-1-BSC/2X21 - Relay base

2900930

<https://www.phoenixcontact.com/gb/products/2900930>



RIF-LDP-48-60 DC - Plug-in module

2900940

<https://www.phoenixcontact.com/gb/products/2900940>



Plug-in module, for mounting on RIF-1, RIF-2, RIF-3, and RIF-4, with freewheeling diode and yellow LED, polarity: A1+, A2-, input voltage: 48 V DC ... 60 V DC ± 20 %

RIF-LDP-110 DC - Plug-in module

2900941

<https://www.phoenixcontact.com/gb/products/2900941>



Plug-in module, for mounting on RIF-1, RIF-2, RIF-3, and RIF-4, with freewheeling diode and yellow LED, polarity: A1+, A2-, input voltage: 110 V DC ± 20 %

RIF-1-BSC/2X21 - Relay base

2900930

<https://www.phoenixcontact.com/gb/products/2900930>



RIF-LV-12-24 UC - Plug-in module

2900942

<https://www.phoenixcontact.com/gb/products/2900942>



Plug-in module, for mounting on RIF-1, RIF-2, RIF-3, and RIF-4, with varistor and yellow LED, input voltage: 12 V AC ... 24 V AC / DC \pm 20 %

RIF-LV-48-60 UC - Plug-in module

2900943

<https://www.phoenixcontact.com/gb/products/2900943>



Plug-in module, for mounting on RIF-1, RIF-2, RIF-3, and RIF-4, with varistor and yellow LED, input voltage: 48 V AC ... 60 V AC / DC \pm 20 %

RIF-1-BSC/2X21 - Relay base

2900930

<https://www.phoenixcontact.com/gb/products/2900930>



RIF-LV-120-230 AC/110 DC - Plug-in module

2900944

<https://www.phoenixcontact.com/gb/products/2900944>



Plug-in module, for mounting on RIF-1, RIF-2, RIF-3, and RIF-4, with varistor and yellow LED, input voltage: 120 V AC... 230 V AC / 110 V DC ± 20 %

RIF-V-12-24 UC - Plug-in module

2900945

<https://www.phoenixcontact.com/gb/products/2900945>



Plug-in module, for mounting on RIF-1, RIF-2, RIF-3, and RIF-4, with varistor, input voltage: 12 V AC ... 24 V AC / DC ± 20 %

RIF-1-BSC/2X21 - Relay base

2900930

<https://www.phoenixcontact.com/gb/products/2900930>



RIF-V-48-60 UC - Plug-in module

2900947

<https://www.phoenixcontact.com/gb/products/2900947>



Plug-in module, for mounting on RIF-1, RIF-2, RIF-3, and RIF-4, with varistor, input voltage: 48 V AC ... 60 V AC / DC \pm 20 %

RIF-V-120-230 UC - Plug-in module

2900948

<https://www.phoenixcontact.com/gb/products/2900948>



Plug-in module, for mounting on RIF-1, RIF-2, RIF-3, and RIF-4, with varistor, input voltage: 120 V AC ... 230 V AC / DC \pm 20 %

RIF-1-BSC/2X21 - Relay base

2900930

<https://www.phoenixcontact.com/gb/products/2900930>



RIF-RC-12-24 UC - Plug-in module

2900949

<https://www.phoenixcontact.com/gb/products/2900949>



Plug-in module, for mounting on RIF-1, RIF-2, RIF-3, and RIF-4, with RC element, input voltage: 12 V AC ... 24 V AC / DC ± 20 %

RIF-RC-48-60 UC - Plug-in module

2900950

<https://www.phoenixcontact.com/gb/products/2900950>



Plug-in module, for mounting on RIF-1, RIF-2, RIF-3, and RIF-4, with RC element, input voltage: 48 V AC ... 60 V AC / DC ± 20 %

RIF-1-BSC/2X21 - Relay base

2900930

<https://www.phoenixcontact.com/gb/products/2900930>



RIF-RC-120-230 UC - Plug-in module

2900951

<https://www.phoenixcontact.com/gb/products/2900951>



Plug-in module, for mounting on RIF-1, RIF-2, RIF-3, and RIF-4, with RC element, input voltage: 120 V AC ... 230 V AC / DC $\pm 20\%$

RIF-T3-24UC - Timer module

2902647

<https://www.phoenixcontact.com/gb/products/2902647>



Plug-in module for extending a relay module to create a timer relay, 3 time functions, 4 time ranges, for mounting on RIF-1, RIF-2, RIF-3, and RIF-4, input voltage: 12 V DC ... 24 V DC

RIF-1-BSC/2X21 - Relay base

2900930

<https://www.phoenixcontact.com/gb/products/2900930>



RIF-BR-12-230 AC - Plug-in module

2907060

<https://www.phoenixcontact.com/gb/products/2907060>



Plug-in module, for mounting on RIF-1, RIF-2, RIF-3, and RIF-4, with bridge rectifier, input voltage: 12 V AC ... 230 V AC

RIF-LDM-12-24 DC - Plug-in module

2907057

<https://www.phoenixcontact.com/gb/products/2907057>



Plug-in module, for mounting on RIF-1, RIF-2, RIF-3, and RIF-4, with freewheeling diode and yellow LED, input voltage: 12 V DC ... 24 V DC $\pm 20\%$, polarity A1-, A2+

RIF-1-BSC/2X21 - Relay base

2900930

<https://www.phoenixcontact.com/gb/products/2900930>



NS 35/ 7,5 PERF 2000MM - DIN rail perforated

0801733

<https://www.phoenixcontact.com/gb/products/0801733>



DIN rail perforated, Pack of 25 (50 m), acc. to EN 60715, material: Steel, galvanized, passivated with a thick layer, Standard profile, color: silver

NS 35/ 7,5 UNPERF 2000MM - DIN rail, unperforated

0801681

<https://www.phoenixcontact.com/gb/products/0801681>



DIN rail, unperforated, Pack of 25 (50 m), acc. to EN 60715, material: Steel, galvanized, passivated with a thick layer, Standard profile, color: silver

RIF-1-BSC/2X21 - Relay base

2900930

<https://www.phoenixcontact.com/gb/products/2900930>



NS 35/ 7,5 WH PERF 2000MM - DIN rail perforated

1204119

<https://www.phoenixcontact.com/gb/products/1204119>



DIN rail perforated, Pack of 25 (50 m), acc. to EN 60715, material: Steel, Galvanized, white passivated, Standard profile, color: silver

NS 35/ 7,5 WH UNPERF 2000MM-VPE 10 - DIN rail, unperforated

1204122

<https://www.phoenixcontact.com/gb/products/1204122>



DIN rail, unperforated, Pack of 10 (20 m), acc. to EN 60715, material: Steel, Galvanized, white passivated, Standard profile, color: silver

RIF-1-BSC/2X21 - Relay base

2900930

<https://www.phoenixcontact.com/gb/products/2900930>



NS 35/ 7,5 AL UNPERF 2000MM - DIN rail, unperforated

0801704

<https://www.phoenixcontact.com/gb/products/0801704>



DIN rail, unperforated, Pack of 25 (50 m), acc. to EN 60715, material: Aluminum, uncoated, Standard profile, color: silver

NS 35/ 7,5 ZN PERF 2000MM - DIN rail perforated

1206421

<https://www.phoenixcontact.com/gb/products/1206421>



DIN rail perforated, Pack of 25 (50 m), acc. to EN 60715, material: Steel, galvanized, Standard profile, color: silver

RIF-1-BSC/2X21 - Relay base

2900930

<https://www.phoenixcontact.com/gb/products/2900930>



NS 35/ 7,5 ZN UNPERF 2000MM - DIN rail, unperforated

1206434

<https://www.phoenixcontact.com/gb/products/1206434>



DIN rail, unperforated, Pack of 25 (50 m), acc. to EN 60715, material: Steel, galvanized, Standard profile, color: silver

NS 35/ 7,5 CU UNPERF 2000MM-VPE 10 - DIN rail, unperforated

0801762

<https://www.phoenixcontact.com/gb/products/0801762>



DIN rail, unperforated, Pack of 10 (20 m), acc. to EN 60715, material: Copper, uncoated, Standard profile, color: copper-colored

RIF-1-BSC/2X21 - Relay base

2900930

<https://www.phoenixcontact.com/gb/products/2900930>



NS 35/ 7,5 CAP - End cap

1206560

<https://www.phoenixcontact.com/gb/products/1206560>

DIN rail end piece, for DIN rail NS 35/7.5



NS 35/15 PERF 2000MM - DIN rail perforated

1201730

<https://www.phoenixcontact.com/gb/products/1201730>



DIN rail perforated, Pack of 25 (50 m), similar to EN 60715, material: Steel, galvanized, passivated with a thick layer, Standard profile, color: silver

RIF-1-BSC/2X21 - Relay base

2900930

<https://www.phoenixcontact.com/gb/products/2900930>



NS 35/15 UNPERF 2000MM - DIN rail, unperforated

1201714

<https://www.phoenixcontact.com/gb/products/1201714>



DIN rail, unperforated, Pack of 25 (50 m), similar to EN 60715, material: Steel, galvanized, passivated with a thick layer, Standard profile, color: silver

NS 35/15 WH PERF 2000MM - DIN rail perforated

0806602

<https://www.phoenixcontact.com/gb/products/0806602>



DIN rail perforated, Pack of 25 (50 m), similar to EN 60715, material: Steel, Galvanized, white passivated, Standard profile, color: white

RIF-1-BSC/2X21 - Relay base

2900930

<https://www.phoenixcontact.com/gb/products/2900930>



NS 35/15 WH UNPERF 2000MM-VPE 10 - DIN rail, unperforated

1204135

<https://www.phoenixcontact.com/gb/products/1204135>



DIN rail, unperforated, Pack of 10 (20 m), similar to EN 60715, material: Steel, Galvanized, white passivated, Standard profile, color: silver

NS 35/15 AL UNPERF 2000MM - DIN rail, unperforated

1201756

<https://www.phoenixcontact.com/gb/products/1201756>



DIN rail, unperforated, similar to EN 60715, material: Aluminum, uncoated, Standard profile, color: silver

RIF-1-BSC/2X21 - Relay base

2900930

<https://www.phoenixcontact.com/gb/products/2900930>



NS 35/15 ZN PERF 2000MM - DIN rail perforated

1206599

<https://www.phoenixcontact.com/gb/products/1206599>



DIN rail perforated, Pack of 25 (50 m), similar to EN 60715, material: Steel, galvanized, Standard profile, color: silver

NS 35/15 ZN UNPERF 2000MM - DIN rail, unperforated

1206586

<https://www.phoenixcontact.com/gb/products/1206586>



DIN rail, unperforated, Pack of 25 (50 m), similar to EN 60715, material: Steel, galvanized, Standard profile, color: silver

RIF-1-BSC/2X21 - Relay base

2900930

<https://www.phoenixcontact.com/gb/products/2900930>



NS 35/15 CU UNPERF 2000MM-VPE 10 - DIN rail, unperforated

1201895

<https://www.phoenixcontact.com/gb/products/1201895>



DIN rail, unperforated, Pack of 10 (20 m), similar to EN 60715, material: Copper, uncoated, Standard profile, color: copper-colored

NS 35/15 CAP - End cap

1206573

<https://www.phoenixcontact.com/gb/products/1206573>

DIN rail end piece, for DIN rail NS 35/15



RIF-1-BSC/2X21 - Relay base

2900930

<https://www.phoenixcontact.com/gb/products/2900930>



NS 35/15-2,3 UNPERF 2000MM-VPE 10 - DIN rail, unperforated

1201798

<https://www.phoenixcontact.com/gb/products/1201798>



DIN rail, unperforated, Pack of 10 (20 m), acc. to EN 60715, material: Steel, galvanized, passivated with a thick layer, Standard profile 2.3 mm, color: silver

Phoenix Contact 2024 © - all rights reserved

<https://www.phoenixcontact.com>

PHOENIX CONTACT Ltd

Halesfield 13, Telford

Shropshire, TF7 4PG

01952 681700

info@phoenixcontact.co.uk