

Single Phase SSR (440VAC)  
10 ~ 40 Amps

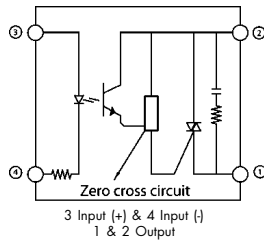
INPUT : DC Control,  
OUTPUT : Triac output



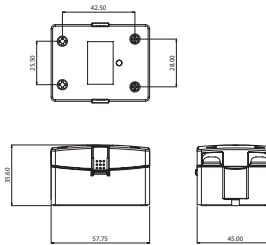
Series : 001 J/K



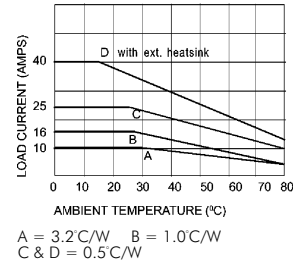
Schematic



Mechanical Drawing



Derating Curve



### Salient Features

- Opto Isolation 2500 VAC • Zero Voltage Turn On/Random Turn On • Reverse Voltage Protection; TTL/CMOS Comptible (Sink mode) • Output : NO/NC Configuration • Safety cover provision
- Built-In Snubber • Chassis Mountable / DIN Mountable with Integral heatsink.

Electrical Specification @ TA = 25°C

Note: For Random T - On SSR, add letter 'K' in place of 'J'.

ELECTRICAL SPECIFICATIONS			PRODUCT PART NUMBERS			
Parameter	Symbol	Unit	001 JDA 481000	001 JDA 481600	001 JDA 482500	001 JDA 484000
Control Volt Range		Vdc	3-32	3-32	3-32	3-32
Control Curr Range		m A	1-25	1-25	1-25	1-25
Pick-Up Voltage		Vdc	3.0	3.0	3.0	3.0
Drop-Out Voltage		Vdc	1.0	1.0	1.0	1.0
Input Resistance			Current Regulator	Current Regulator	Current Regulator	Current Regulator
<b>Rms On State Current</b>	<b>I<sub>T</sub></b>	<b>A</b>	<b>10</b>	<b>16</b>	<b>25</b>	<b>40</b>
Mains Control Volt	V <sub>rms</sub>	Vac	48-480	48-480	48-480	48-480
Rep Peak Off State Voltage	V <sub>drm</sub>	Vpk	800	800	800	800
Off State Leakage Curr	I <sub>drm</sub>	mA	10	10	10	10
Zero T-On Voltage		Vpk	25	25	25	25
On state Voltage Drop	V <sub>TM</sub>	Vac	1.6	1.6	1.85	1.85
Peak one Cycle Surge Curr (Non Rep)	I <sub>TSM</sub>	A	100	160	250	300
Holding Current	I <sub>H</sub>	m A	75	75	150	150
Critical Rate of Rise of Off State Voltage	dv/dt	V/μs	200	200	250	250
Thermal Resistance	R <sub>TH</sub>	°C/W	3.4	2.5	1.5	1.2
Frequency Range	f	Hz	47 ~ 63	47 ~ 63	47 ~ 63	47 ~ 63
Turn-On	T-On	ms	10	10	10	10
Turn-Off	T-Off	ms	10	10	10	10
Operating Temp	T Oper	°C	-30 to +80	-30 to +80	-30 to +80	-30 to +80
Fusing Current	I <sub>T</sub> <sup>2</sup>	A <sup>2</sup> S	50	120	300	400

Input

Output

\*Our policy is one of continuous development and specifications are subject to change without notice. warranty is limited to a period of one year for relay value only

Single Phase SSR (440VAC)  
10 ~ 40 Amps

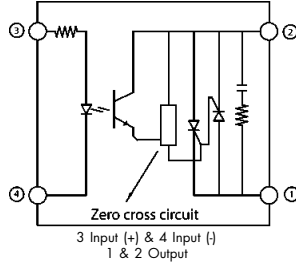
INPUT : DC Control,  
OUTPUT : Back - to - Back SCR



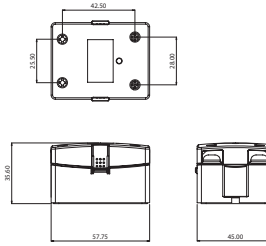
Series : 001 SJ/K



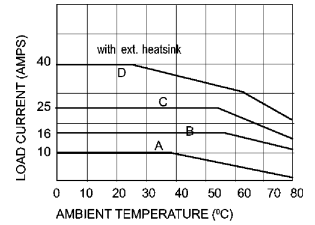
Schematic



Mechanical Drawing



Derating Curve



A = 3.2°C/W B = 1.0°C/W  
C & D = 0.5°C/W

For Heatsink details refer to "Recommended Heatsink" chart

### Salient Features

- Opto Isolation 2500 VAC • Zero Voltage Turn On/Random Turn On • Reverse Voltage Protection; TTL/CMOS Compatible (Sink mode) • Output : NO/NC Configuration • Suitable for inductive loads
- Built-In Snubber • Safety cover provision • Chassis Mountable / DIN Mountable with Integral heatsink.

Electrical Specification @ TA = 25°C

Note: For Random T - On SSR, add letter 'K' in place of 'J'.

ELECTRICAL SPECIFICATIONS			PRODUCT PART NUMBERS			
Parameter	Symbol	Unit	001 SJDA 481000	001 SJDA 481600	001 SJDA 482500	001 SJDA 484000
Control Volt Range		Vdc	3-32	3-32	3-32	3-32
Control Curr Range		m A	1-25	1-25	1-25	1-25
Pick-Up Voltage		Vdc	3.0	3.0	3.0	3.0
Drop-Out Voltage		Vdc	1.0	1.0	1.0	1.0
Input Resistance		kohms	Current Regulator	Current Regulator	Current Regulator	Current Regulator
<b>Rms On State Current</b>	<b>I<sub>T</sub></b>	<b>A</b>	<b>10</b>	<b>16</b>	<b>25</b>	<b>40</b>
Mains Control Volt	Vrms	Vac	48-480	48-480	48-480	48-480
Peak Off State Voltage	V <sub>drm</sub>	Vpk	800	800	800	800
Off State Leakage Curr	I <sub>drm</sub>	mA	10	10	10	10
Zero T-On Voltage		Vpk	20	20	20	20
On state Voltage Drop	V <sub>TM</sub>	Vac	1.6	1.6	1.6	1.6
Peak one Cycle Surge Curr (Non Rep)	I <sub>TSM</sub>	A	100	160	250	400
Holding Current	I <sub>H</sub>	m A	50	70	120	250
Critical Rate of Rise of Off State Voltage	dv/dt	V/μs	200	500	500	500
Thermal Resistance	R <sub>TH</sub>	°C/W	2.0	1.6	1.0	0.88
Frequency Range	f	Hz	47 ~ 63	47 ~ 63	47 ~ 63	47 ~ 63
Turn-On	T-On	ms	10	10	10	10
Turn-Off	T-Off	ms	10	10	10	10
Operating Temp	T Oper	°C	-30 to +80	-30 to +80	-30 to +80	-30 to +80
Fusing Current	I <sub>T</sub> <sup>2</sup>	A <sup>2</sup> S	50	128	220	560

\*Our policy is one of continuous development and specifications are subject to change without notice. Warranty is limited to a period of one year for relay value only.

Input

Output